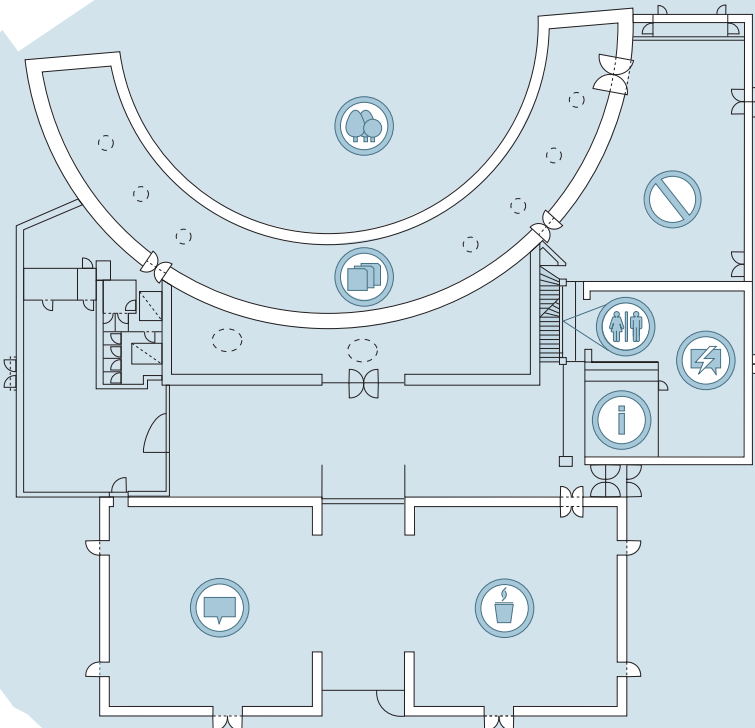




PLONE 2004 CONFERENCE SCHEDULE

Volksgarten Discothek Floor Plan

- TALKS
- TUTORIALS
- LIGHTNING TALKS
- INFORMATION
+43.664.202.96.34
- RESTRICTED AREA
- GARDEN AREA
- SNACKS
- RESTROOM DOWN STAIRS



TALKS. MONDAY		20	TUTORIALS. MONDAY	
09 0 0	State of Plone Plone Founders Alan Runyan. Enfold Systems and Alexander Limi. Plone Solutions Opening keynote talk on the State of Plone and its past, present and future from its founders.	09 0 0	Archetypes Benjamin Saller. ObjectRealms First part is a primer to Archetypes, designed for those who are new to Archetypes-based development or for people who never used AT before. The second part of the tutorial is for developers who are already familiar with Archetypes and who are interested to get deeper into the subject.	
09 4 5	Case study: Epson Intranet Munwar Shariff. CIGNEX Demo that explains how Epson Electronics America saved millions of dollars by implementing its web initiatives using Zope.			
..	10:25 BREAK	..	10:25 BREAK	
10 4 0	Eduplone - Managing Educational Content Jodok Batlogg. Telesis and Georg Pleger Information about the Eduplone consortium, educational technology standardization,example applications and Eduplone roadmap.	10 4 0	Best-Practices for Plone Development Joel Burton. Independent You've learned about page templates, Archetypes, and have dug through the Collective, but might need a hand in actually building your site. This tutorial covers numerous development methods, including the use of version control for source code, setting up a Zope server for most effective development, using the Zope debugger, both directly and via IDEs, using 'Site Products' to hold the skins and logic for your site in one place, and techniques for synchronizing development with work on a laptop or workstation.	
11 2 5	Building Large Scale CMS for Companies Andreas Jung. Zopyx Software Focus on a media CMS built with Plone that handles a large number of SGML and XML documents used for the production of print, CD/DVD and electronic products. The talk will show how to build such a large system and how to deal with large amounts of data in the ZODB.			
..	12:05 LUNCH	..	12:05 LUNCH	
13 0 5	XPI - Surveys and Evaluations in Plone Martin Samek. IMC University of Krems The Plone-based survey product XPI gathers company information for management. It is suitable for use in the corporate environment as well as for use in doing teaching evaluations in universities. This talk/case study highlights the advantages of this product.	13 0 5	Leveraging the Standards: Improving the WebDAV experience... NOW! Sidnei da Silva. Enfold Systems Plone has been especially targeted and excels at user interaction with web applications via the browser, but mature tools such as WEBDAV allow a powerful way of delivering and managing information on the Web. Effective use of such tools with Plone brings it into the realm of document management, which is now receiving well-deserved attention. Developers will learn how to importing data into Archetypes using RelaxNG-validated XML documents, interact with Zope using Greg Stein's davlib, and control content creation in CMF/Plone using the Content Types Registry.	
13 5 0	BOSCOPE -- (B) Open Source Collaborative Portal Gregoire Weber Plone add-ons causing dependency problems? Boscope is a Plone-based distribution with ratings on third party products. Boscope currently incorporates Plone 2.0, CMFUrlSkinSwitcher, and CMFCollection.			
..	14:30 SHORT BREAK FOR SNACKS	..	14:30 SHORT BREAK FOR SNACKS	
14 4 5	Case Study: Plone and Zope in the Brazilian Government Giuseppe Romagnoli and Eliane Silva. Serpro In this case study, the process of negotiating the adoption of free software technology in the Brazilian government is described, along with a summary of the use of RAD features in Zope and Plone for portal development.	14 4 5	Plone's Form Controller Framework Geoff Davis. Independent CMFFormController is used throughout Plone and most Plone products for managing form behavior. If you want to customize Plone or create your own products, you need to understand how FormController works! In this tutorial I will cover the what, why, and how of CMFFormController. I will take participants step-by-step through detailed examples that illustrate the features of FormController.	
15 3 0	Plone for Governments Andy Stein. City of Newport News Two essential applications are described: Plone as a repository of software for local and state government and Plone as a generalized and reusable Citizen Portal Engine. A working repository, available at www.gocc.gov, is presented for use in state and local governments in the US to share and collaborate on software applications.			
..	15:10 BREAK	..	15:10 BREAK	
16 2 5	Business of Plone Paul Everitt and Joel Burton. Plone Foundation How big is the world of Plone? How many businesses are located in which countries? This session, hosted by the Plone Foundation marketing folks, discusses the market of Plone and launches an initiative to collect more data. An update will also be given on Plone Foundation activities.	16 2 5	BOFS, Discussions or Lightning Talks Open to everyone	
..	17.05 END	..	17.05 END	